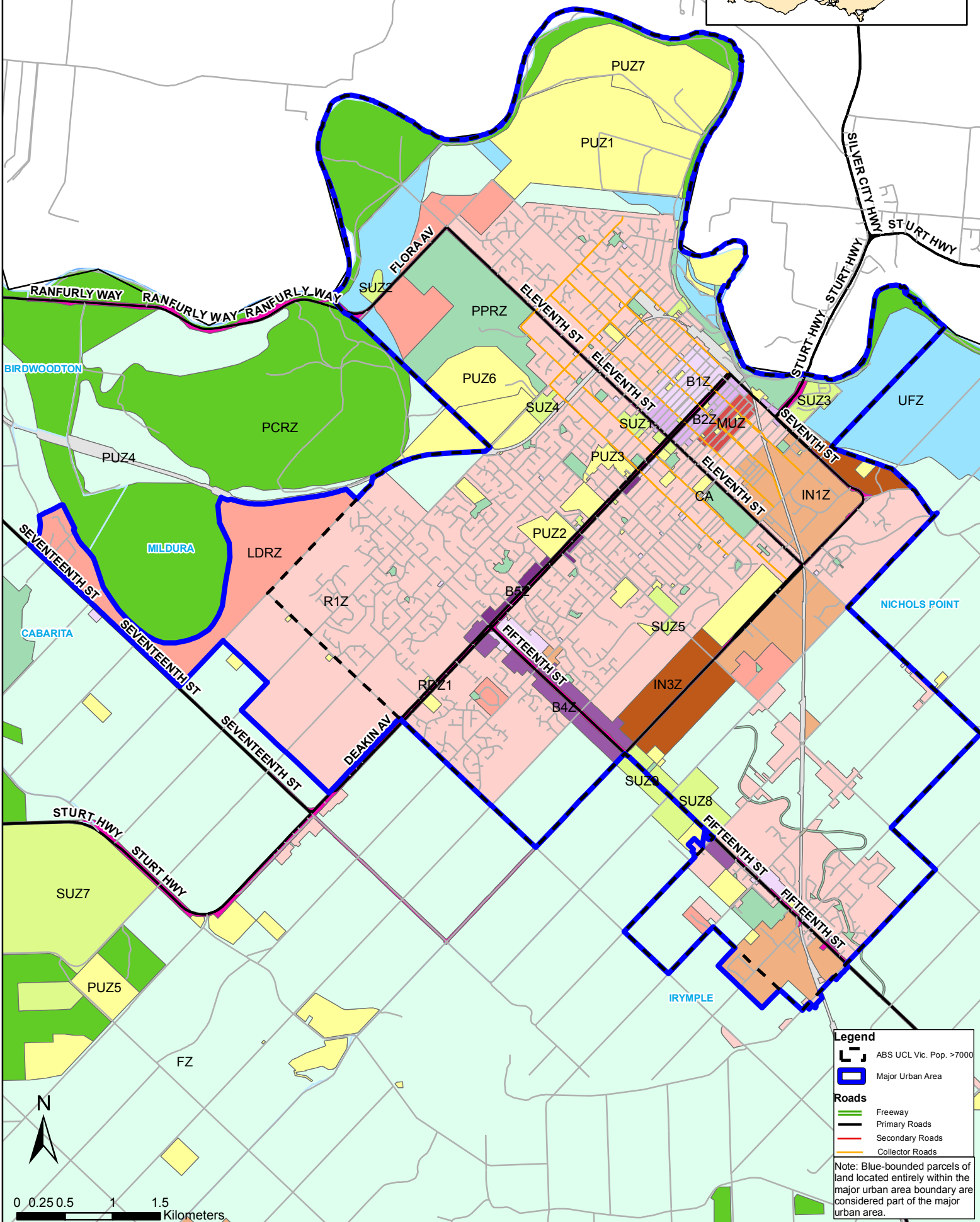
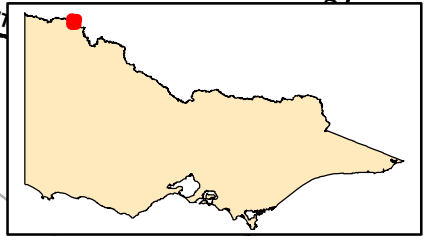


# NIRV major urban area boundary - Mildura



**Legend**

- ABS UCL Vic. Pop. >7000
- Major Urban Area

**Roads**

- Freeway
- Primary Roads
- Secondary Roads
- Collector Roads

Note: Blue-bounded parcels of land located entirely within the major urban area boundary are considered part of the major urban area.